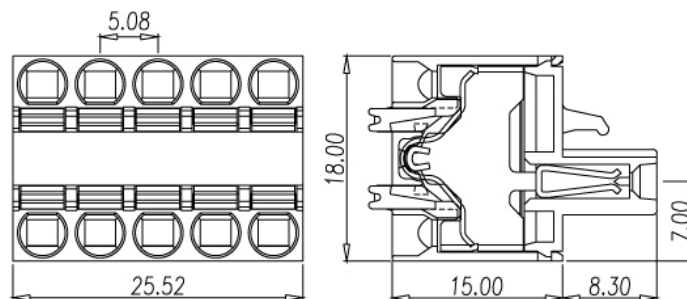
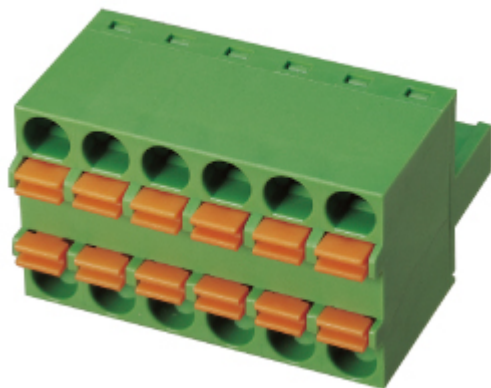




2ESDB



Pitch: 5.08mm

| Approval | | |
|--------------------------------------|--------------|------------------|
| Technical Data | UL | IEC |
| Rated voltage | 300V | 250V |
| Rated current | 12A | 12A |
| Wire range | | 6mm ² |
| Solid wire (AWG) | 24~12 | |
| Stranded wire (AWG/mm ²) | 24~12 | |
| Rated surge voltage (UL/IEC/Max.) | 1.6 / 2 / KV | |
| Torque (Lb-in) | | |
| Screw | | |
| Wire strip length | 11~12mm | |
| Pole | Cat. No. | |
| 02 | 2ESDB-02P | |
| : | : | |
| : | : | |
| 24 | 2ESDB-24P | |