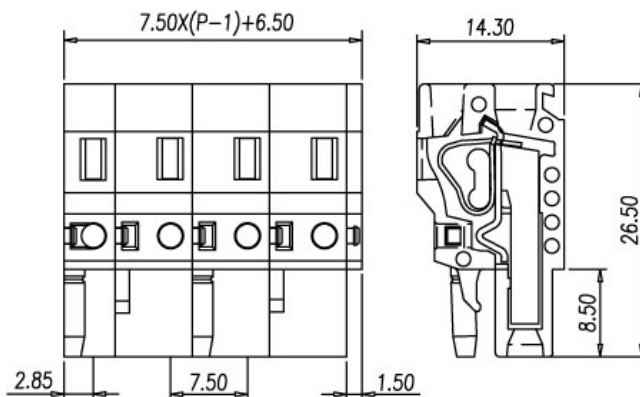
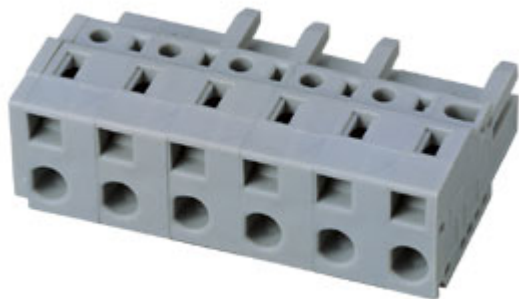




0134-31



Pitch: 7.50mm

Approval		
Technical Data	UL	IEC
Rated voltage	300V	450V
Rated current	15A	12A
Wire range		1.5mm ²
Solid wire (AWG)	26~14	
Stranded wire (AWG/mm ²)		
Rated surge voltage (UL/IEC/Max.)	1.6 / 2.5 / KV	
Torque (Lb-in)		
Screw		
Wire strip length	10~11mm	
Pole	Cat. No.	
01	0134-3101	
02	0134-3102	
03	0134-3103	
:	:	